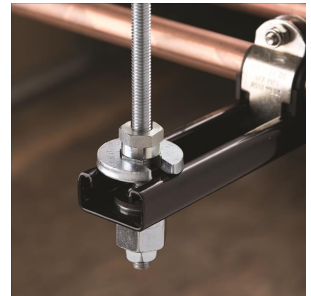
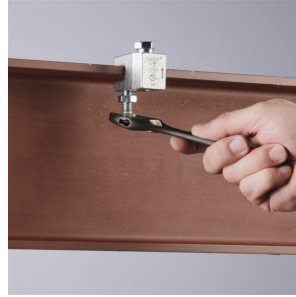
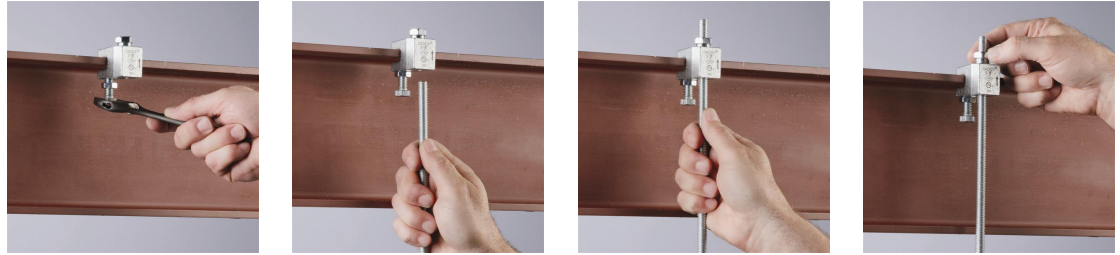


FIXING, FASTENING AND SUPPORT PRODUCTS

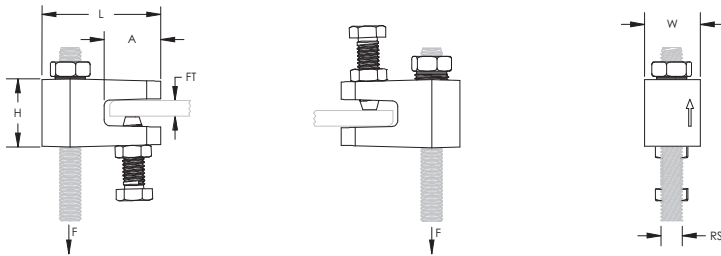
FEATURED PRODUCTS



CADDY ROD LOCK Beam Clamp



- Prefabricated assemblies easily lift and lock into place, helping to save time and money
- Easy "push-to-install" design allows installers to simply push the threaded rod through the mounting hole, instantly holding it in position
- Lock nut can be finger tightened, locking the rod in place
- Works with slightly damaged threads and minor burrs on the threaded rod
- Conforms with Federal Specification WW-H-171 (Type 23), Manufacturers Standardization Society ANSI®/MSS-SP-58 (Type 19 and 23)



Material: Cast Iron
Finish: Electrogalvanized



Part Number	Rod Size RS	Flange Thickness FT	Height H	Length L	Width W	A	Static Load 1 F1	Static Load 2 F2
CRLB37EG	3/8"	1/8" - 3/8"	1 3/16"	2.06"	1"	0.98"	250 lb	500 lb

For use on plain and electro zinc plated hardware only.

Static Load 1 represents 1/8" to 3/16" (3 mm to 5 mm) flange thickness. Static Load 2 represents 1/4" to 3/8" (6 mm to 10 mm) flange thickness.

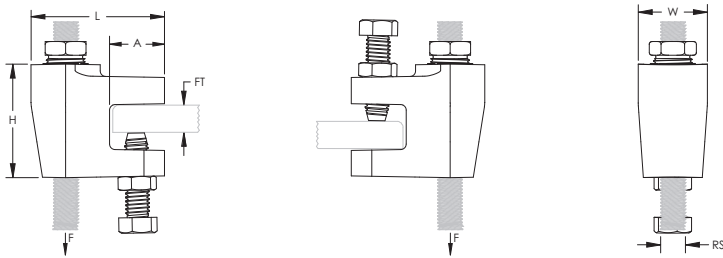
Recognizing that torque wrenches are generally not used or available on many job sites, the setscrew should be tightened so it contacts the I-beam and then an additional 1/2 turn added.



CADDY ROD LOCK Beam Clamp, Thick Flange



- Prefabricated assemblies easily lift and lock into place, helping to save time and money
- Easy "push-to-install" design allows installers to simply push the threaded rod through the mounting hole, instantly holding it in position
- Lock nut can be finger tightened, locking the rod in place
- Works with slightly damaged threads and minor burrs on the threaded rod
- Conforms with Federal Specification WW-H-171 (Type 23), Manufacturers Standardization Society ANSI®/MSS-SP-58 (Type 19 and 23)



Material: Cast Iron
Finish: Electrogalvanized



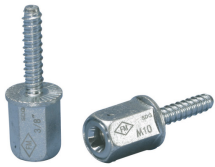
Part Number	Rod Size RS	Flange Thickness FT	Height H	Length L	Width W	A	Static Load F
CRLB50EG	1/2"	3/8" - 3/4"	2.1"	2.4"	1.3"	1"	1,100 lb

For use on plain and electro zinc plated hardware only.

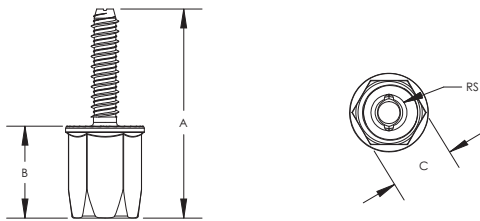
FM® Approved in the bottom mount orientation only.

Recognizing that torque wrenches are generally not used or available on many job sites, the setscrew should be tightened so it contacts the I-beam and then an additional 1/2 turn added.

CADDY ROD LOCK Anchor Screw



- For use with concrete and solid brick
- Prefabricated assemblies easily lift and lock into place, helping to save time and money
- Works with slightly damaged threads and minor burrs on the threaded rod



Material: Steel
Finish: Electrogalvanized



Part Number	Rod Size RS	A	B	C	Drill Bit Diameter	Drill Hole Depth	Static Load F
CRLA37EG	3/8"	2 7/8"	1 1/4"	7/8"	5/16"	2"	652 lb

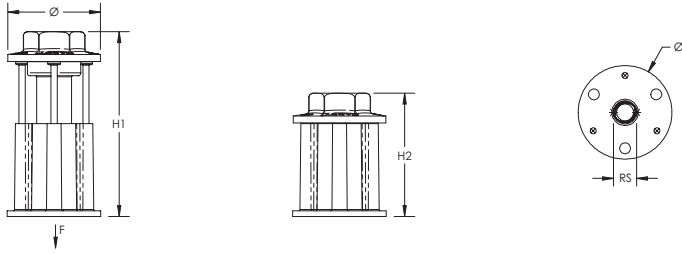
For use on plain and electro zinc plated hardware only.
Tested in 3,000 psi (20.68 MPa) concrete and soft or hard wood with a 9/32" pilot hole.



CADDY ROD LOCK Plywood Form Preset Anchor



- Eliminate overhead drilling into building structure – CADDY ROD LOCK Preset Anchors are cast in place
- Nails hold the anchor in place during the pour and easily break off with a strike of a hammer once the plywood forms are removed
- Easy "push-to-install" design allows installers to simply push the threaded rod through the mounting hole, instantly holding it in position
- Works with slightly damaged threads and minor burrs on the threaded rod
- Prefabricated assemblies easily lift and lock into place, helping to save time and money
- Plastic flange acts as insert locator when the forms are removed



Material: Steel
 Finish: Electrogalvanized

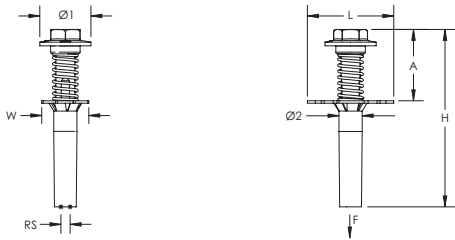


Part Number	Rod Size RS	Diameter Ø	Height 1 H1	Height 2 H2	Static Load F
CRLW37EG	3/8"	1.65"	3.2"	2.4"	1,407 lb
CRLW50EG	1/2"	1.90"	3.3"	2.5"	1,618 lb

CADDY ROD LOCK Metal Decking Preset Anchor



- Set in place through a drilled hole in the metal decking before the concrete is poured
- Eliminate overhead drilling into building structure – CADDY ROD LOCK Preset Anchors are cast in place
- Easy “push-to-install” design allows installers to simply push the threaded rod through the mounting hole, instantly holding it in position
- Can be used in lower and upper flute installations
- Works with slightly damaged threads and minor burrs on the threaded rod
- Prefabricated assemblies easily lift and lock into place, helping to save time and money
- Plastic flange acts as insert locator when the forms are removed



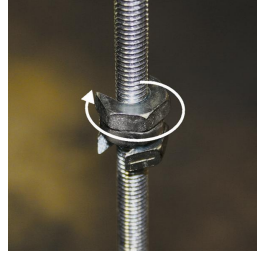
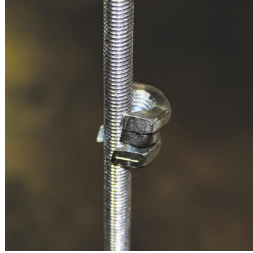
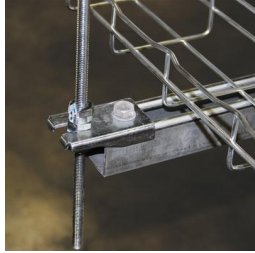
Material: Steel
 Finish: ElectroGalvanized



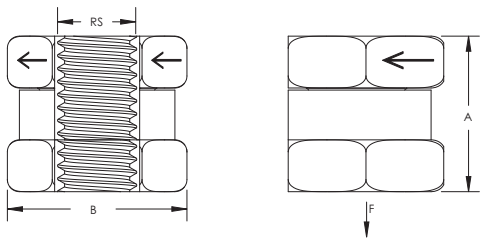
Part Number	Rod Size RS	Diameter 1 Ø1	Diameter 2 Ø2	Height H	Length L	Width W	A	Drill Bit Diameter	Static Load F
CRLM37EG	3/8"	1.65"	0.7"	5.6"	2.8"	1 1/2"	2.3"	3/4"	830 lb
CRLM50EG	1/2"	1.95"	0.8"	5.7"	2.8"	1 1/2"	2.4"	7/8"	830 lb



SN Series Nut



- Allows side mounting of nut to threaded rod
- Reduces the need for threading compared to standard nuts and washers
- Ideal for retrofit projects, such as trapeze installations, where disassembly of the support system is not desired
- Works with slightly damaged threads and minor burrs on the threaded rod
- Reduces installation time up to 50%



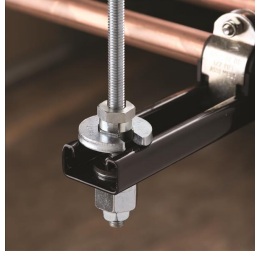
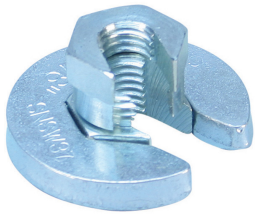
Material: Steel

Finish: Electrogalvanized

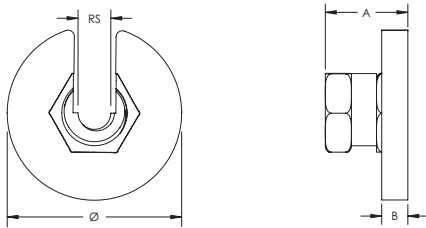
Part Number	Rod Size RS	A	B	Static Load F
SN25	1/4"	0.55"	5/8"	500 lb
SN37	3/8"	0.75"	3/4"	1,350 lb
SN50	1/2"	0.90"	1"	2,250 lb

For use on plain and electro zinc plated hardware only.

SNSW Flanged Nut



- Ideal for retrofit projects, such as trapeze installations, where disassembly of the support system is not desired
- Use as a stopper when installing CADDY ROD LOCK assemblies
- Can be easily installed, removed, and repositioned at any location along the threaded rod
- Ready to use out of the box and eliminates multiple pieces of standard hardware
- Functions as a hex nut and flat washer combined
- Washer is wide enough to work with standard strut channel profiles



Material: Steel

Finish: Electrogalvanized

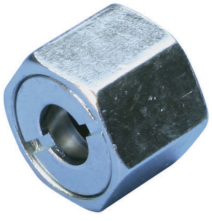
Static Load Safety Factor: 3:1

Part Number	Rod Size RS	Diameter Ø	A	B	Wrench Size	Static Load F
SNSW37	3/8"	1.67"	0.79"	1/4"	3/4"	300 lb
SNSW50	1/2"	1.90"	0.95"	1/4"	1"	300 lb

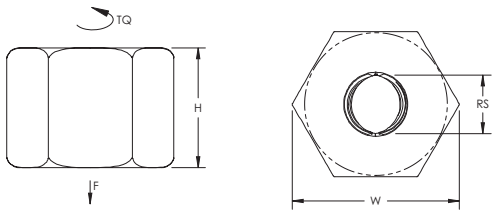
For use on plain and electro zinc plated hardware only.



CADDY ROD LOCK Nut



- Easy "push-to-install" design allows installers to simply push the threaded rod through the mounting hole, instantly holding it in position
- Fast installation onto long threaded rods – push the nut in place instead of threading it up the rod
- Excellent alignment and easy fine adjustment by spinning the nut
- Extremely useful in tight spaces where wrenches are difficult to use



Material: Steel

Finish: Electrogalvanized

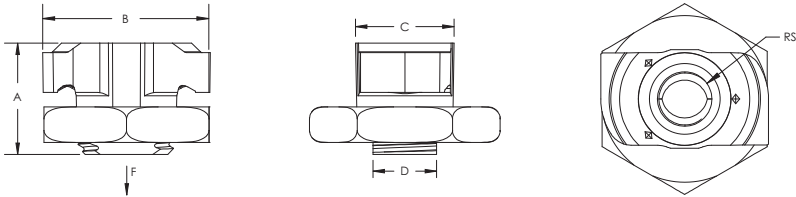
Part Number	Rod Size RS	Height H	Width W	Wrench Size	Torque TQ	Static Load F
CRLN37EG	3/8"	0.8"	1.1"	15/16"	5 ft lb	1,350 lb

Static Load based on Grade 2 threaded rod.

CADDY ROD LOCK Channel Nut



- Provides fast universal attachment of threaded rod and hardware to standard strut profiles
- Can be used to prefabricate assemblies which can be quickly pushed onto previously installed threaded rods
- Works with slightly damaged threads and minor burrs on the threaded rod



Material: Cast Iron
Finish: Electrogalvanized

Part Number	Rod Size RS	A	B	C	D	Static Load F
CRLS37EG	3/8"	0.91"	1.4"	0.769"	0.53"	750 lb

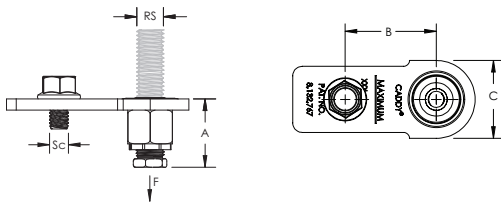
For use on plain and electro zinc plated hardware only.



CADDY ROD LOCK Strut End Bracket



- Allows for the quick creation, installation, and adjustment of multi-level trapeze assemblies
- Installs with the open side of strut channel facing down allowing for objects to be quickly positioned by sliding along the channel
- Mounts to the end of any length of standard strut
- Accommodates slight variances in rod-to-rod position of the trapeze and the length of the strut
- Can be used to prefabricate assemblies which can be quickly pushed onto previously installed threaded rods
- Easy "push-to-install" design allows installers to simply push the threaded rod through the mounting hole, instantly holding it in position
- Integrated adjustment nut enables fine tuning the system height up or down
- Lock nut can be finger tightened, locking the rod in place
- Works with slightly damaged threads and minor burrs on the threaded rod



Material: Steel
Finish: Electrogalvanized

Part Number	Rod Size RS	Ultimate Static Load 1 F1	Ultimate Static Load 2 F2
CRLSEB37EG	3/8"	1,000 lb	460 lb

A	B	C	Screw Diameter Sc	Wrench Size 1	Wrench Size 2
1.43"	1.9"	1.63"	M10	15/16"	11/16"

Ultimate Static Load 1 represents 12 GA strut channel type A. Ultimate Static Load 2 represents 14 GA strut channel type C.

Wrench Size 1 represents CADDY ROD LOCK hex nut size. Wrench Size 2 represents screw head size.

Static loads are based on one pair of CADDY ROD LOCK Strut End Brackets.

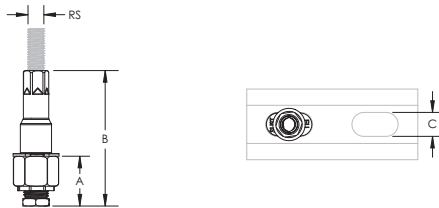
Static loads are assumed to be uniformly distributed.

Must be installed with the open side of the strut channel facing down.

CADDY ROD LOCK Strut Nut



- Allows for the quick creation, installation, and adjustment of multi-level trapeze assemblies
- Installs in strut profiles without the need to insert fingers or tools into the strut
- Easy "push-to-install" design allows installers to simply push the threaded rod through the mounting hole, instantly holding it in position
- Integrated adjustment nut enables fine tuning the system height up or down
- Lock nut can be finger tightened, locking the rod in place
- Accommodates slight variances in rod-to-rod position of the trapeze
- Can be used to prefabricate assemblies which can be quickly pushed onto previously installed threaded rods
- Works with slightly damaged threads and minor burrs on the threaded rod



Material: Steel
Finish: Electrogalvanized

Part Number	Strut Type	Rod Size RS	A	B	C	Wrench Size 1	Wrench Size 2
CRLSL37EG	A (1 5/8" x 1 5/8")	3/8"	1.19"	3.23"	9/16"	15/16"	14 mm

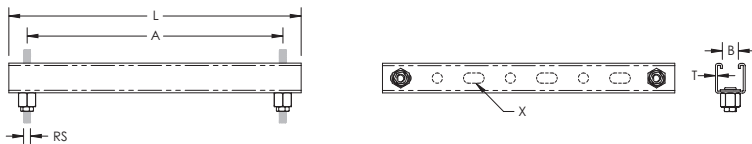
Wrench Size 1 represents CADDY ROD LOCK hex nut size. Wrench Size 2 represents stem nut size.
Must be installed with the open side of the strut channel facing up.
CADDY ROD LOCK Strut Nuts must be installed at a minimum of 1" (25.4 mm) from both ends of the strut channel.



CADDY ROD LOCK Strut



- Allows for the quick creation, installation, and adjustment of multi-level trapeze assemblies
- Ready to use out of the box and eliminates the need for cutting and preparing sections of strut
- Easy "push-to-install" design allows installers to simply push the threaded rod through the mounting hole, instantly holding it in position
- Integrated adjustment nut enables fine tuning the system height up or down
- Accommodates slight variances in rod-to-rod position of the trapeze
- No loose parts or special tools needed for installation
- Lock nut can be finger tightened, locking the rod in place
- Works with all accessories that fit standard A or C type strut channels



Material: Steel

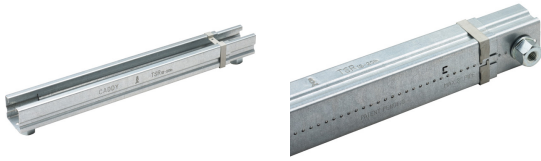
Part Number	Rod Size RS	Strut Type	Length L	Thickness T	A	B	X
Finish: Electrogalvanized, Pregalvanized							
CRLP237L14	3/8"	A (1 5/8" x 1 5/8")	16"	12 GA	14"	7/8"	9/16" x 1 1/8"
CRLP237L18	3/8"	A (1 5/8" x 1 5/8")	20"	12 GA	18"	7/8"	9/16" x 1 1/8"
CRLP237L22	3/8"	A (1 5/8" x 1 5/8")	24"	12 GA	22"	7/8"	9/16" x 1 1/8"
CRLP237L26	3/8"	A (1 5/8" x 1 5/8")	28"	12 GA	26"	7/8"	9/16" x 1 1/8"
CRLP237L38	3/8"	A (1 5/8" x 1 5/8")	40"	12 GA	38"	7/8"	9/16" x 1 1/8"
CRLP237L50	3/8"	A (1 5/8" x 1 5/8")	52"	12 GA	50"	7/8"	9/16" x 1 1/8"
CRLP137L14	3/8"	C (13/16" x 1 5/8")	16"	14 GA	14"	7/8"	9/16" x 1 1/8"
CRLP137L18	3/8"	C (13/16" x 1 5/8")	20"	14 GA	18"	7/8"	9/16" x 1 1/8"
CRLP137L22	3/8"	C (13/16" x 1 5/8")	24"	14 GA	22"	7/8"	9/16" x 1 1/8"
CRLP137L26	3/8"	C (13/16" x 1 5/8")	28"	14 GA	26"	7/8"	9/16" x 1 1/8"
CRLP137L38	3/8"	C (13/16" x 1 5/8")	40"	14 GA	38"	7/8"	9/16" x 1 1/8"
CRLP250L14	1/2"	A (1 5/8" x 1 5/8")	16"	12 GA	14"	7/8"	9/16" x 1 1/8"
CRLP250L18	1/2"	A (1 5/8" x 1 5/8")	20"	12 GA	18"	7/8"	9/16" x 1 1/8"
CRLP250L22	1/2"	A (1 5/8" x 1 5/8")	24"	12 GA	22"	7/8"	9/16" x 1 1/8"
CRLP250L26	1/2"	A (1 5/8" x 1 5/8")	28"	12 GA	26"	7/8"	9/16" x 1 1/8"
CRLP250L38	1/2"	A (1 5/8" x 1 5/8")	40"	12 GA	38"	7/8"	9/16" x 1 1/8"
CRLP250L50	1/2"	A (1 5/8" x 1 5/8")	52"	12 GA	50"	7/8"	9/16" x 1 1/8"
CRLP150L14	1/2"	C (13/16" x 1 5/8")	16"	14 GA	14"	7/8"	9/16" x 1 1/8"
CRLP150L18	1/2"	C (13/16" x 1 5/8")	20"	14 GA	18"	7/8"	9/16" x 1 1/8"
CRLP150L22	1/2"	C (13/16" x 1 5/8")	24"	14 GA	22"	7/8"	9/16" x 1 1/8"

Part Number	Rod Size RS	Strut Type	Length L	Thickness T	A	B	X
CRLP150L26	1/2"	C (13/16" x 1 5/8")	28"	14 GA	26"	7/8"	9/16" x 1 1/8"
CRLP150L38	1/2"	C (13/16" x 1 5/8")	40"	14 GA	38"	7/8"	9/16" x 1 1/8"
Finish: Epoxy Powder Coated, Electrogalvanized – Color: Black							
CRLP237L14BA	3/8"	A (1 5/8" x 1 5/8")	16"	12 GA	14"	7/8"	9/16" x 1 1/8"
CRLP237L18BA	3/8"	A (1 5/8" x 1 5/8")	20"	12 GA	18"	7/8"	9/16" x 1 1/8"
CRLP237L22BA	3/8"	A (1 5/8" x 1 5/8")	24"	12 GA	22"	7/8"	9/16" x 1 1/8"
CRLP237L26BA	3/8"	A (1 5/8" x 1 5/8")	28"	12 GA	26"	7/8"	9/16" x 1 1/8"
CRLP237L38BA	3/8"	A (1 5/8" x 1 5/8")	40"	12 GA	38"	7/8"	9/16" x 1 1/8"
CRLP237L50BA	3/8"	A (1 5/8" x 1 5/8")	52"	12 GA	50"	7/8"	9/16" x 1 1/8"
CRLP137L14BA	3/8"	C (13/16" x 1 5/8")	16"	14 GA	14"	7/8"	9/16" x 1 1/8"
CRLP137L18BA	3/8"	C (13/16" x 1 5/8")	20"	14 GA	18"	7/8"	9/16" x 1 1/8"
CRLP137L22BA	3/8"	C (13/16" x 1 5/8")	24"	14 GA	22"	7/8"	9/16" x 1 1/8"
CRLP137L26BA	3/8"	C (13/16" x 1 5/8")	28"	14 GA	26"	7/8"	9/16" x 1 1/8"
CRLP137L38BA	3/8"	C (13/16" x 1 5/8")	40"	14 GA	38"	7/8"	9/16" x 1 1/8"

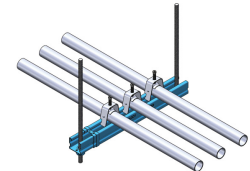
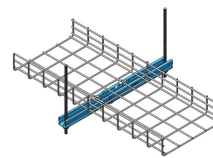
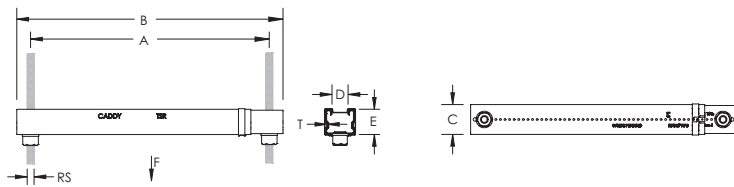
CADDY ROD LOCK Strut must be installed with the open side of the channel facing up.
For indoor applications only.



Telescoping Strut Replacement



- Captive threaded nuts enable fastening to threaded rod supports without loose parts
- Telescopes to the desired length and is locked in place by snapping closed a spring retainer clip
- Standard strut profile runs the entire length of the part, allowing most standard fittings to be placed anywhere between the rods
- Integrated ruler displays space between hanger rods in inches and centimeters
- Supports up to six 2" (50 DN) conduits, six 2" (50 DN) water filled pipes at 10' (3 m) spacing, or up to 18" (450 mm) cable tray
- Conduit can be supported on the top and bottom, eliminating the need for double sided strut
- Conduit and pipe can be placed directly on the strut profile, saving vertical space in buildings with limited room for installation



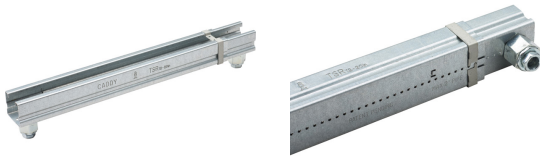
Material: Steel

Finish: Pregalvanized

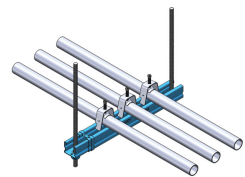
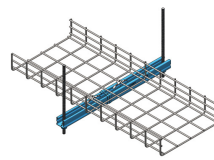
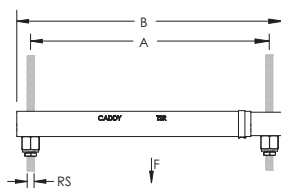
Part Number	Rod Size RS	Thickness T	A	B	C	D	E	Static Load 1 F1	Static Load 2 F2
TSR122025	1/4"	0.04"	12 1/2" - 20"	14" - 21 1/2"	1 5/8"	7/8"	1 3/8"	300 lb	200 lb
TSR1220	3/8"	0.04"	12 1/2" - 20"	14" - 21 1/2"	1 5/8"	7/8"	1 3/8"	300 lb	200 lb

Static Load 1 represents a distributed load for 12" - 20" (300 - 500 mm) installations and a point load for 12" - 16" (300 - 400 mm) installations. Static Load 2 represents a point load for 16" - 20" (400 - 500 mm) installations.

CADDY ROD LOCK Telescoping Strut Replacement



- Easy "push-to-install" design allows installers to simply push the threaded rod through the mounting hole, instantly holding it in position
- Telescopes to the desired length and is locked in place by snapping closed a spring retainer clip
- Standard strut profile runs the entire length of the part, allowing most standard fittings to be placed anywhere between the rods
- Allows installers to prefabricate complex assemblies and quickly lift and lock them into place
- Lock nut can be finger tightened, locking the rod in place
- Allows for the quick creation, installation, and adjustment of multi-level trapeze assemblies
- Captive threaded nuts enable fastening to threaded rod supports without loose parts
- Integrated ruler displays space between hanger rods in inches and centimeters
- Supports up to six 2" (50 DN) conduits, six 2" (50 DN) water filled pipes at 10' (3 m) spacing, or up to 18" (450 mm) cable tray
- Conduit can be supported on the top and bottom, eliminating the need for double sided strut
- Conduit and pipe can be placed directly on the strut profile, saving vertical space in buildings with limited room for installation



Material: Steel

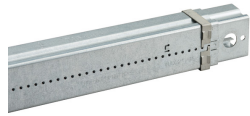
Finish: Pregalvanized

Part Number	Rod Size RS	Thickness T	A	B	C	D	E	Static Load 1 F1	Static Load 2 F2
TSR122038RL	3/8"	0.04"	12 1/2" - 20"	14" - 21 1/2"	1 5/8"	7/8"	1 3/8"	300 lb	200 lb

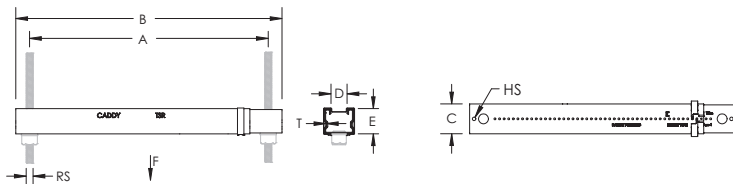
Static Load 1 represents a distributed load for 12" - 20" (300 - 500 mm) installations and a point load for 12" - 16" (300 - 400 mm) installations. Static Load 2 represents a point load for 16" - 20" (400 - 500 mm) installations.



Telescoping Strut Replacement, No Nut



- Can be attached directly to a wall for wall-mounted applications
- Telescopes to the desired length and is locked in place by snapping closed a spring retainer clip
- Standard strut profile runs the entire length of the part, allowing most standard fittings to be placed anywhere between the rods
- Integrated ruler displays space between hanger rods in inches and centimeters
- Supports up to six 2" (50 DN) conduits, six 2" (50 DN) water filled pipes at 10' (3 m) spacing, or up to 18" (450 mm) cable tray
- Conduit can be supported on the top and bottom, eliminating the need for double sided strut
- Conduit and pipe can be placed directly on the strut profile, saving vertical space in buildings with limited room for installation



Material: Steel

Finish: Pregalvanized

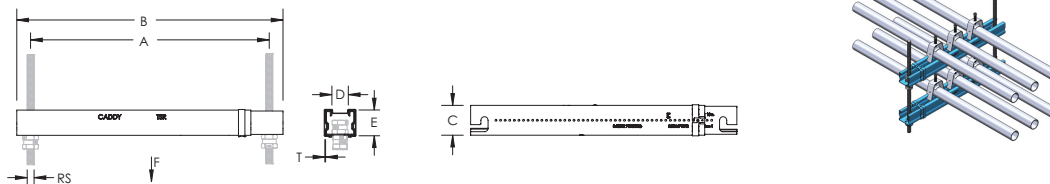
Part Number	Rod Size RS	Hole Size HS	Thickness T	A	B	C	D	E	Static Load 1 F1	Static Load 2 F2
TSR1220N	1/2"	3/16"	0.04"	12 1/2" - 20"	14" - 21 1/2"	1 5/8"	7/8"	1 3/8"	300 lb	200 lb

Static Load 1 represents a distributed load for 12" - 20" (300 - 500 mm) installations and a point load for 12" - 16" (300 - 400 mm) installations. Static Load 2 represents a point load for 16" - 20" (400 - 500 mm) installations.

Telescoping Strut Replacement, Retrofit



- Slotted ends allow the bracket to be installed with four CADDY SN Nuts on threaded rod above an existing trapeze, saving contractor time and limiting building downtime
- Telescopes to the desired length and is locked in place by snapping closed a spring retainer clip
- Standard strut profile runs the entire length of the part, allowing most standard fittings to be placed anywhere between the rods
- Integrated ruler displays space between hanger rods in inches and centimeters
- Supports up to six 2" (50 DN) conduits, six 2" (50 DN) water filled pipes at 10' (3 m) spacing, or up to 18" (450 mm) cable tray
- Conduit can be supported on the top and bottom, eliminating the need for double sided strut
- Conduit and pipe can be placed directly on the strut profile, saving vertical space in buildings with limited room for installation



Material: Steel

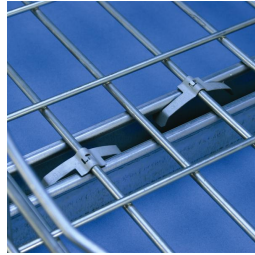
Finish: Pregalvanized

Part Number	Rod Size RS	Thickness T	A	B	C	D	E	Static Load 1 F1	Static Load 2 F2
TSR1220R	3/8"	0.04"	12 1/2" - 20"	14" - 21 1/2"	1 5/8"	7/8"	1 3/8"	300 lb	200 lb

Static Load 1 represents a distributed load for 12" - 20" (300 - 500 mm) installations and a point load for 12" - 16" (300 - 400 mm) installations. Static Load 2 represents a point load for 16" - 20" (400 - 500 mm) installations.

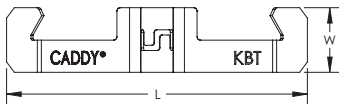


Wire Basket Tray Clip – KBT



The KBT Wire Basket Tray Clip is an easy-to-install time-saving solution for securely attaching wire basket tray to strut. Simply place the basket tray on top of the strut, position the KBT clip over the tray at the desired position, squeeze the KBT and slide it in place to finish the connection - that simple! The installation is completed without any tools or additional hardware. The KBT Wire Basket Tray Clip is another time-saving solution designed to help contractors complete projects faster, easier, and more efficiently.

- Attaches wire basket tray to strut without additional hardware
- No tools required

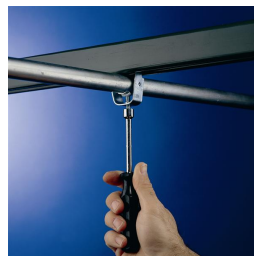
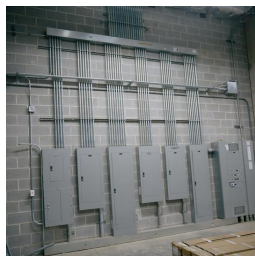
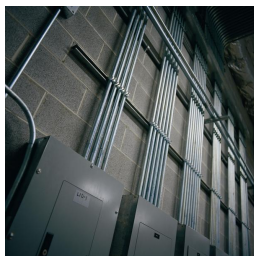
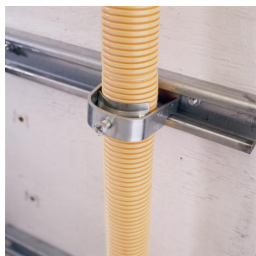


Part Number	KBT
Material	Spring Steel
Finish	CADDY ARMOUR
Wire Size	3/16" – 5/16"
Length (L)	2.9"
Width (W)	0.6"
Standard Packaging Quantity	100 pc
UPC	78285668971
EAN-13	8711893108590

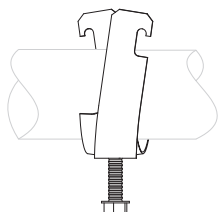
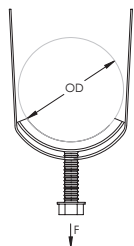
Use two clips per strut support for trays up to 12" (300mm). Use three clips per strut support for trays up to 18" (457mm) and add one clip per strut support for each additional 6" (150mm) of tray width.

No load rating, for positioning only.

SCH2 Single Piece Strut Clamp for Cable/Conduit



- One-piece cable/conduit clamp with protective boot
- No screws or bolts to drop
- Requires only a screwdriver or nutdriver for installation
- Fits into open side of strut channel



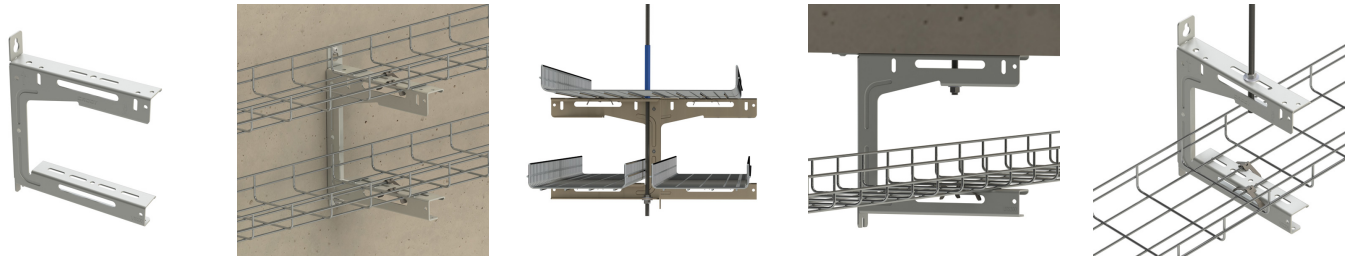
Material: Steel
Finish: Electrogalvanized



Part Number	Outer Diameter OD	EMT Conduit Size	Rigid Conduit/Pipe Size	Static Load F
SCH6B	0.10" – 0.63"	-	-	200 lb
SCH8B	0.34" – 0.71"	1/2"	-	200 lb
SCH12B	0.57" – 0.92"	3/4"	1/2"	200 lb
SCH16B	0.72" – 1.16"	1"	3/4"	200 lb
SCH20B	1.00" – 1.51"	1 1/4"	1"	200 lb
SCH24B	1.25" – 1.74"	1 1/2"	1 1/4"	350 lb
SCH32B	1.74" – 2.20"	2"	1 1/2"	350 lb
SCH40B	2.00" – 2.38"	-	2"	350 lb
SCH48B	2.38" – 2.88"	2 1/2"	2 1/2"	350 lb
SCH56B	2.72" – 3.50"	3"	3"	350 lb
SCH64B	3.25" – 4.00"	3 1/2"	3 1/2"	350 lb
SCH72B	3.85" – 4.50"	4"	4"	350 lb

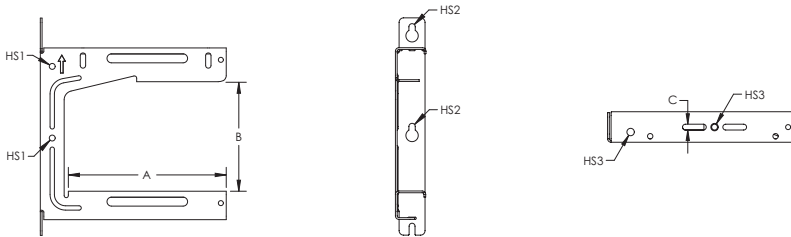


Universal Tray Support



Universal Tray Supports are the perfect solution for supporting cable trays while maintaining accessibility to cables after the installation is completed. Universal Tray Supports are different from labor-intensive traditional methods fabricated with ceiling brackets, strut channels, cantilever arms, and various hardware. Universal Tray Supports can be attached to ceiling, wall, threaded rod, or cable hanging systems to support all possible project requirements and additional cable capacity.

- Universal design to accommodate various cable tray hanging methods including ceiling, wall, threaded rod, or cable hanging systems
- C-shape maintains accessibility to cables after installation is completed
- Strut profile on both arms allow for two runs of cable trays per bracket
- Top tab can be bent allowing for extra wide cable trays to be installed when two brackets are fastened back-to-back
- Key holes provided for wall mount applications
- Works with the KBT Wire Basket Tray Clip for securing wire basket cable tray or J-bolts for securing cable ladder



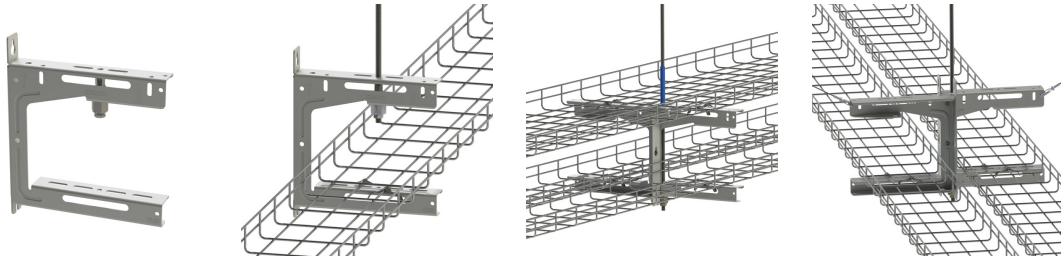
Material: Steel

Finish: Electrogalvanized

Part Number	A	B	C	Hole Size 1 HS1	Hole Size 2 HS2	Hole Size 3 HS3	Static Load 1 F1	Static Load 2 F2
UTS150	6.5"	6.1"	0.325"	0.33"	0.33"	0.41"	100 lb	200 lb
UTS200	8.8"	6.1"	0.325"	0.33"	0.35"	0.41"	100 lb	200 lb
UTS300	12.7"	6.2"	0.325"	0.33"	0.33"	0.41"	100 lb	200 lb

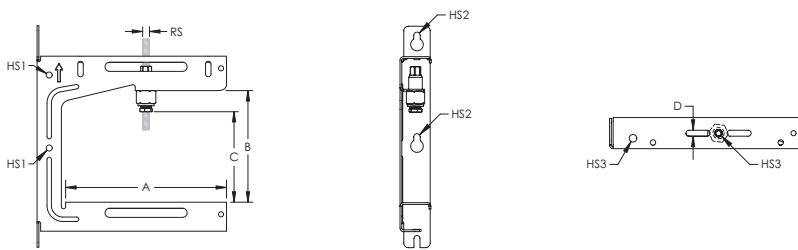
Refer to Static Load 1 for installations with threaded rod. Refer to Static Load 2 for wall mount and 3 mm CADDY SPEED LINK installations.

CADDY ROD LOCK Universal Tray Support



Universal Tray Supports are the perfect solution for supporting cable trays while maintaining accessibility to cables after the installation is completed. Universal Tray Supports are different from labor-intensive traditional methods fabricated with ceiling brackets, strut channels, cantilever arms, and various hardware. Universal Tray Supports can be attached to ceiling, wall, threaded rod, or cable hanging systems to support all possible project requirements and additional cable capacity.

- Universal design to accommodate various cable tray hanging methods including ceiling, wall, threaded rod, or cable hanging systems
- C-shape maintains accessibility to cables after installation is completed
- Easy "push-to-install" design allows installers to simply push the threaded rod through the mounting hole, instantly holding it in position
- Strut profile on both arms allow for two runs of cable trays per bracket
- Top tab can be bent allowing for extra wide cable trays to be installed when two brackets are fastened back-to-back
- Key holes provided for wall mount applications
- Works with the KBT Wire Basket Tray Clip for securing wire basket cable tray or J-bolts for securing cable ladder



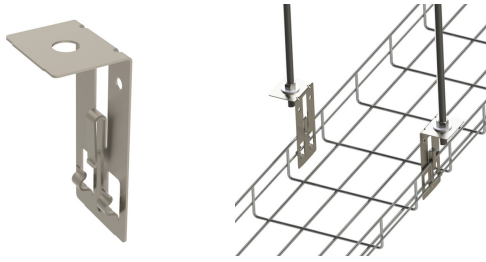
Material: Steel
Finish: Electrogalvanized

Part Number	Rod Size RS	A	B	C	D	Hole Size 1 HS1	Hole Size 2 HS2	Hole Size 3 HS3	Static Load 1 F1	Static Load 2 F2
UTS15038RL	3/8"	6.5"	6.1"	5"	0.325"	0.33"	0.33"	0.41"	100 lb	200 lb
UTS20038RL	3/8"	8.8"	6.1"	5"	0.325"	0.33"	0.35"	0.41"	100 lb	200 lb
UTS30038RL	3/8"	12.7"	6.2"	5"	0.325"	0.33"	0.33"	0.41"	100 lb	200 lb

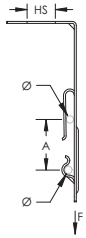
Refer to Static Load 1 for installations with threaded rod. Refer to Static Load 2 for wall mount and 3 mm CADDY SPEED LINK installations.



Wire Basket Support Clip



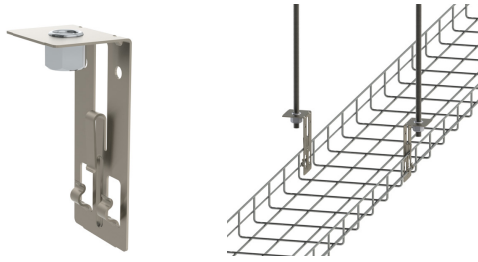
- Allows wire basket to be suspended from threaded rod without the need of a strut trapeze
- Securing fingers provides superior stability, preventing damage to the cables in the basket
- Allows for pre-fabrication off site



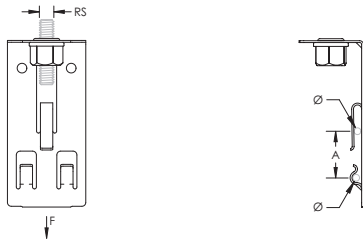
Material: Spring Steel
 Finish: CADDY ARMOUR

Part Number	Hole Size HS	A	Diameter Ø	Static Load F
WBS2	0.54"	1" - 1 1/4"	0.14" - 0.24"	120 lb

Wire Basket Support Clip with Nut



- Allows wire basket to be suspended from threaded rod without the need of a strut trapeze
- Pre-riveted nut eliminates the need for additional hardware
- Securing fingers provides superior stability, preventing damage to the cables in the basket
- Allows for pre-fabrication off site



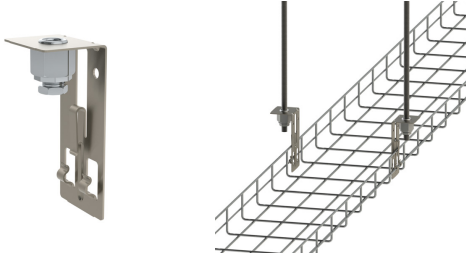
Material: Spring Steel, Steel

Finish: CADDY ARMOUR, ElectroGalvanized

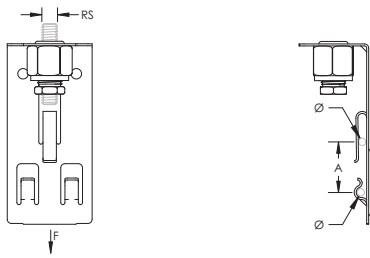
Part Number	Rod Size RS	Diameter Ø	A	Static Load F
WBS37	3/8"	0.14" – 0.24"	1" – 1 1/4"	120 lb



CADDY ROD LOCK Wire Basket Support Clip



- Allows wire basket to be suspended from threaded rod without the need of a strut trapeze
- Easy "push-to-install" design allows installers to simply push the threaded rod through the mounting hole, instantly holding it in position
- Securing fingers provides superior stability, preventing damage to the cables in the basket
- Allows for pre-fabrication off site

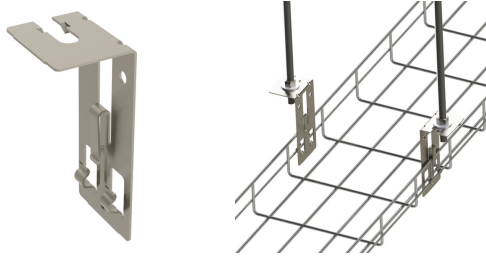


Material: Spring Steel, Steel

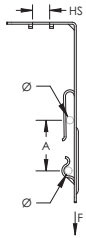
Finish: CADDY ARMOUR, ElectroGalvanized

Part Number	Rod Size RS	Diameter Ø	A	Static Load F
WBS37RL	3/8"	0.14" – 0.24"	1" – 1 1/4"	120 lb

Wire Basket Support Clip, Retrofit



- Allows wire basket to be suspended from threaded rod without the need of a strut trapeze
- Slotted design allows wire basket to be installed above an existing trapeze
- Securing fingers provides superior stability, preventing damage to the cables in the basket
- Allows for pre-fabrication off site

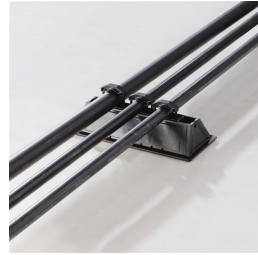


Material: Spring Steel
 Finish: CADDY ARMOUR

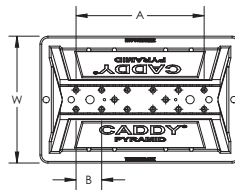
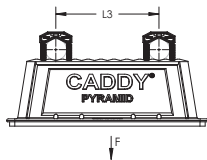
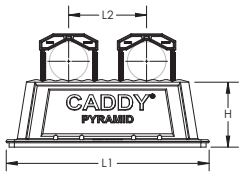
Part Number	Hole Size HS	A	Diameter Ø	Static Load F
WBS1	0.4"	1" – 1 1/4"	0.14" – 0.24"	120 lb



CADDY PYRAMID Tool-Free Pipe Support Kit



- Push-in clamps install without the need for additional tools or strut clamps
- Ready to use out of the box, saving installation time and labor
- Plastic clamps and base will not corrode pipe
- Clamps come in two different sizes to fit project needs
- Base includes multiple holes to accommodate a variety of clamp sizes and configurations
- Additional clamps can be purchased separately for additional pipe runs
- Foam bottom offers low abrasion interface for better roof membrane protection
- Provides superior load distribution, even with varying rooftop surfaces
- Compatible with roof surfaces including single ply, bituminous, metal and spray foam
- Multiple sizes and load ratings offer the ability to tailor the solution to the application
- Easy to transport to the roof
- Supports green building requirements; thermoplastic bases are made from recycled material and can contribute to earning LEED credits



Material: Polyethylene, Polypropylene, Nylon

Temperature: -50 to 150 °F

Static Load Safety Factor: 3:1

Part Number	L1 (")	L2 (")	L3 (")	W (")	H (")	A (")	B (")	Surface Area (in ²)	Unit Weight (lb)	F (lb)
PTF6	8	-	3.2	6	4	4.8	1.6	41	0.6	300
PTF10	12 1/2	4.8	6.4	8	4	8.0	1.6	92	1.0	1,000
PTF16	19	8.0	9.6	8	4	11.2	1.6	142	2.0	1,500

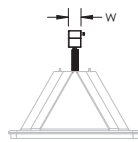
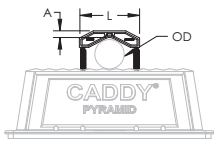
Part Number	Number of Clamps Included		Maximum Clamp Capacity	
	PTF1C	PTF2C	PTF1C	PTF2C
PTF6	1	-	3	1
PTF10	-	2	5	2
PTF16	-	2	7	3

Length 2 represents maximum pipe center to pipe center using PTF2C clamps. Length 3 represents maximum pipe center to pipe center using PTF1C clamps.

CADDY PYRAMID Tool-Free Pipe Clamp



- Push-in clamps install without the need for additional tools or strut clamps
- Clamps come in two different sizes to fit project needs
- Plastic clamps and base will not corrode pipe



Material: Nylon

Temperature: -50 to 150 °F

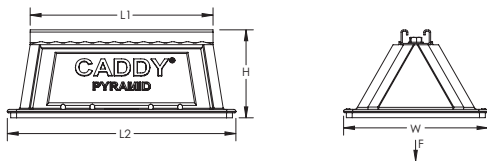
Part Number	Outer Diameter OD	Length L	Width W	A	Unit Weight
PTF1C	0.50" – 1.32"	1.6"	3/4"	3/8"	0.025 lb
PTF2C	0.84" – 2.38"	3.2"	3/4"	3/8"	0.045 lb



CADDY PYRAMID ST Fixed Strut Support



- Provides superior support for pipe, conduit, duct, cable tray and equipment
- Foam bottom offers low abrasion interface for better roof membrane protection
- Compatible with roof surfaces including single ply, bituminous, metal and spray foam
- Provides superior load distribution, even with varying rooftop surfaces
- Ready to use out of the box, saving installation time and labor
- Multiple sizes and load ratings offer the ability to tailor the solution to the application
- Easy to transport to the roof
- Hot-dip galvanized and UV stabilized for long lasting performance
- Supports green building requirements; thermoplastic bases are made from recycled material and can contribute to earning LEED credits



Material: Polyethylene, Polypropylene, Steel
 Finish: Hot-Dip Galvanized
 Temperature: -50 to 150 °F
 Static Load Safety Factor: 3:1

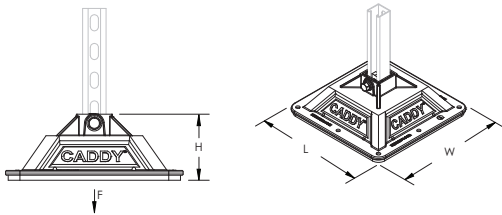
Part Number	Length 1 L1	Length 2 L2	Height H	Width W	Surface Area	Unit Weight	Static Load F
PSF6C	6"	8"	4.8"	6"	41 in ²	1 lb	300 lb
PSF10C	10"	12 1/2"	4.8"	8"	92 in ²	2 lb	1,000 lb
PSF10D	10"	12 1/2"	6.4"	8"	92 in ²	3 lb	1,000 lb
PSF16C	16"	19"	4.8"	8"	142 in ²	3 lb	1,500 lb
PSF16D	16"	19"	6.4"	8"	142 in ²	5 lb	1,500 lb

Static load at 73.1 kPa (10.6 psi) roof loading. Contact project or roofing engineer for maximum allowable load on individual project roof system.

CADDY PYRAMID H-Frame Post Base



- Foam or rubber bottom offers low abrasion interface for better roof membrane protection
- Compatible with roof surfaces including single ply, bituminous, metal and spray foam
- Provides superior load distribution, even with varying rooftop surfaces
- Rubber rooftop interface ideal for solar panel array installations
- Mounting hardware pre-installed in bases
- Hot-dip galvanized and UV stabilized for long lasting performance
- Accepts standard strut channels
- Supports green building requirements; thermoplastic bases are made from recycled material and can contribute to earning LEED credits



Material: Steel, Polypropylene, Polyethylene

Finish: Hot-Dip Galvanized

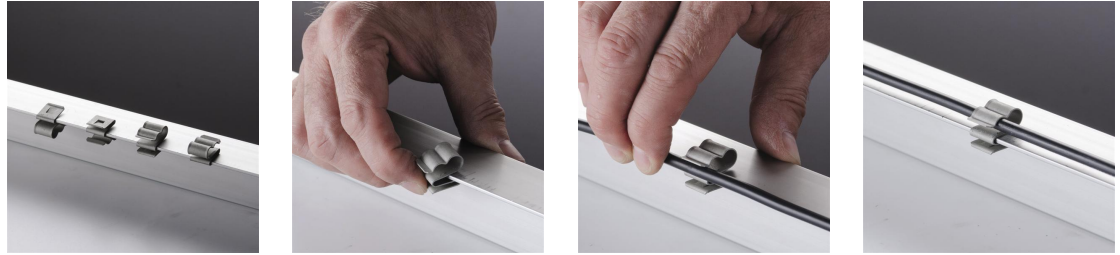
Temperature: -30 to 130 °F

Static Load Safety Factor: 3:1

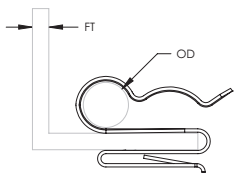
Part Number	Rooftop Interface	Strut Type	Height H	Length L	Width W	Surface Area	Unit Weight	Static Load F
PHB	Foam	A (1 5/8" x 1 5/8")	4.60"	12 3/8"	12 3/8"	144 in ²	3.9 lb	750 lb
PHBR	Rubber	A (1 5/8" x 1 5/8")	4.66"	12 3/8"	12 3/8"	144 in ²	4.5 lb	750 lb



Solar Snap Clip



- Supports up to two transmission cables on solar arrays
- Mounts in four orientations
- Flared edges to protect cable
- Gripping tab provides a secure fit to the frame



Material: Spring Steel
Finish: CADDY ARMOUR

Part Number	Flange Thickness FT	Outer Diameter OD
SCSOL1A	1/16" – 5/64"	0.196" – 0.275"

ANSI is a registered trademark of American National Standards Institute. FM is a registered certification mark of FM Approvals LLC, LTD. ICC-ES is a registered trademark of ICC Evaluation Service, LLC. UL, UR, cUL, cUR, cULus and cURus are registered certification marks of UL LLC.

WARNING

Pentair products shall be installed and used only as indicated in Pentair's product instruction sheets and training materials. Instruction sheets are available at erico.pentair.com and from your Pentair customer service representative. Improper installation, misuse, misapplication or other failure to completely follow Pentair's instructions and warnings may cause product malfunction, property damage, serious bodily injury and death and/or void your warranty.

© 2017 Pentair All rights reserved
Pentair, CADDY, CADWELD, CRITEC, ERICO, ERIFLEX, ERITECH and LENTON are owned by Pentair or its global affiliates.
All other trademarks are the property of their respective owners. Pentair reserves the right to change specifications without prior notice.